

Currency Pair: **EUR/USD**

Short-Term Trend: Slightly Bearish

Volatility: Low

| <u>Resist3</u> | <u>Resist2</u> | <u>Resist1</u> | <u>Pivot</u> | <u>Support1</u> | <u>Support2</u> | <u>Support3</u> |
|----------------|----------------|----------------|--------------|-----------------|-----------------|-----------------|
| 1.2474 | 1.2409 | 1.2340 | 1.2330 | 1.2290 | 1.2238 | 1.2203 |

| Daily Short Term Position for Day-Trader | <u>Trade Strategy</u> | <u>Open @</u> | <u>Exit @</u> | <u>StopLoss @</u> | <u>Trail-Stop</u> | <u>Risk pips</u> | <u>Profit pips</u> |
|--|-----------------------|-------------------------|---------------|-------------------------|-------------------|------------------|--------------------|
| | Sell Euro | 1.2334 | 1.2296 | 1.2359 | 0 | 25 | 38 |
| | <u>Trade Style</u> | <u>Confidence Level</u> | | <u>Valid Time Frame</u> | | | |
| | Conservative | Medium | | Intraday | | | |

| Multi-Day Position for Aggressive Investor | <u>Trade Strategy</u> | <u>Open @</u> | <u>Exit @</u> | <u>StopLoss @</u> | <u>Trail-Stop</u> | <u>Risk pips</u> | <u>Profit pips</u> |
|--|-----------------------|-------------------------|---------------|-------------------------|-------------------|------------------|--------------------|
| | Buy Euro | 1.2474 | 1.2731 | 1.2232 | 200 | 242 | 257 |
| | <u>Trade Style</u> | <u>Confidence Level</u> | | <u>Valid Time Frame</u> | | | |
| | T.B.D. | Medium | | T.B.D. | | | |

Comments: A large reversal Head & Shoulder has formed in this pair. If Euro breaks its major resistance level around 1.2360~1.2390, we could see 1.2957 in the near future.

Currency Pair: **USD/CAD**

Short-Term Trend: Range Bound

Volatility: Low

| <u>Resist3</u> | <u>Resist2</u> | <u>Resist1</u> | <u>Pivot</u> | <u>Support1</u> | <u>Support2</u> | <u>Support3</u> |
|----------------|----------------|----------------|--------------|-----------------|-----------------|-----------------|
| 1.1487 | 1.1477 | 1.1433 | 1.1395 | 1.1375 | 1.1357 | 1.1328 |

| Daily Short Term Position for Day-Trader | <u>Trade Strategy</u> | <u>Open @</u> | <u>Exit @</u> | <u>StopLoss @</u> | <u>Trail-Stop</u> | <u>Risk pips</u> | <u>Profit pips</u> |
|--|-----------------------|-------------------------|---------------|-------------------------|-------------------|------------------|--------------------|
| | No Position | .0000 | .0000 | .0000 | 0 | 0 | 0 |
| | <u>Trade Style</u> | <u>Confidence Level</u> | | <u>Valid Time Frame</u> | | | |
| | | | | | | | |

| Multi-Day Position for Aggressive Investor | <u>Trade Strategy</u> | <u>Open @</u> | <u>Exit @</u> | <u>StopLoss @</u> | <u>Trail-Stop</u> | <u>Risk pips</u> | <u>Profit pips</u> |
|--|-----------------------|-------------------------|---------------|-------------------------|-------------------|------------------|--------------------|
| | No Position | .0000 | .0000 | .0000 | 0 | 0 | 0 |
| | <u>Trade Style</u> | <u>Confidence Level</u> | | <u>Valid Time Frame</u> | | | |
| | | | | | | | |

Comments: USD is in a Long-Term Down Trend vs CAD. However, USD is unlikely to fall much further vs CAD in 2006.

Please See Page-2 for Our Analysis on the USD/JPY Currency Pair.

Our 1-Day P&L Performance Based on This PremiumFX Forecast Analysis, and A Snapshot of the Actual Market Data for April-20-2006 Can Be Found on Page-3.

Risk Warning and Disclaimer: Trading foreign exchange carries a high level of risk, and may not be suitable for all investors. Before deciding to trade foreign exchange you should carefully consider your investment objectives, level of experience, and risk appetite. Our forecast data contained in this report are submitted to our subscribers for the assistance of our subscribers, but are not to be relied upon as authoritative or taken in substitution for the exercise of judgments by any recipient. Please visit <http://fxselect.com/fxselect/Disclaimer.htm> for our complete subscription terms and conditions.

Currency Pair: **USD/JPY**

Short-Term Trend: Range Bound

Volatility: Low

| | | | | | | |
|----------------|----------------|----------------|--------------|-----------------|-----------------|-----------------|
| <u>Resist3</u> | <u>Resist2</u> | <u>Resist1</u> | <u>Pivot</u> | <u>Support1</u> | <u>Support2</u> | <u>Support3</u> |
| 118.5200 | 118.1800 | 117.9900 | 117.7500 | 117.4100 | 117.0800 | 116.4800 |

| | | | | | | | |
|---|-----------------------|--------------------|-------------------------|-------------------------|-------------------|------------------|--------------------|
| Daily Short Term Position for Day-Trader | <u>Trade Strategy</u> | <u>Open @</u> | <u>Exit @</u> | <u>StopLoss @</u> | <u>Trail-Stop</u> | <u>Risk pips</u> | <u>Profit pips</u> |
| | No Position | .0000 | .0000 | .0000 | 10 | 0 | 0 |
| | | <u>Trade Style</u> | <u>Confidence Level</u> | <u>Valid Time Frame</u> | | | |
| Multi-Day Position for Aggressive Investor | <u>Trade Strategy</u> | <u>Open @</u> | <u>Exit @</u> | <u>StopLoss @</u> | <u>Trail-Stop</u> | <u>Risk pips</u> | <u>Profit pips</u> |
| | No Position | .0000 | .0000 | .0000 | 0 | 0 | 0 |
| | | <u>Trade Style</u> | <u>Confidence Level</u> | <u>Valid Time Frame</u> | | | |

Comments: This pair is in a tightening & consolidating mode since Feb-2006. A major break out is imminent. Watch for emerging trend.

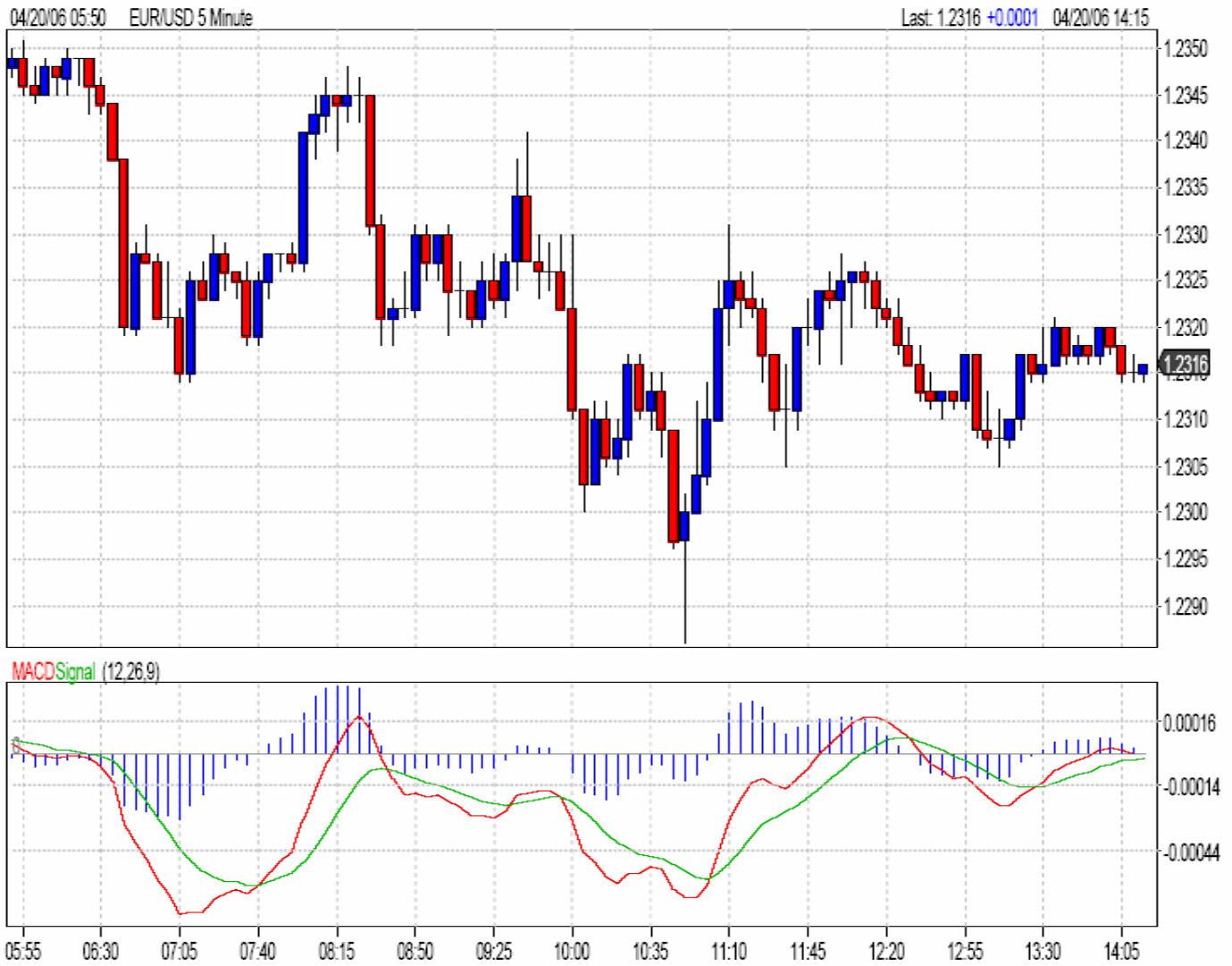
Sample PremiumFX Forecast Report

Please View Page-3 for:

- (1) a Snapshot of the Actual EUR/USD Market Data on April-20-2006
- (2) Our 1-Day P&L Performance based on this PremiumFX Forecast Analysis.

Risk Warning and Disclaimer: Trading foreign exchange carries a high level of risk, and may not be suitable for all investors. Before deciding to trade foreign exchange you should carefully consider your investment objectives, level of experience, and risk appetite. Our forecast data contained in this report are submitted to our subscribers for the assistance of our subscribers, but are not to be relied upon as authoritative or taken in substitution for the exercise of judgments by any recipient. Please visit <http://fxselect.com/fxselect/Disclaimer.htm> for our complete subscription terms and conditions.

Market Snapshot for the Euro/USD Pair on April-20-2006



1-Day Trading P&L Performance Based on April-20-2006 PremiumFX Forecast Analysis from FXSelect.com

PremiumFX Forecast issued @8am:

R3: 1.2474 R2: 1.2409 R1: 1.2340 P: 1.2330 S1: 1.2290 S2: 1.2238 S3: 1.2203

Day-Trade Order Placed @8am : Sell Euro @ 1.2334 Exit Position @ 1.2296

Actual Trading Performance for April-20-2006:

Currency Pair

EUR/USD

Time Posted

Apr-20, 2006

Profit n Loss (pips)

38

Summary for 'Currency Pair' = EUR/USD (1 detail record)

Sum: 38 pips